

Specimen Collection and Shipping Instructions

2019 Novel Coronavirus (COVID-19), NAA — Nasopharyngeal & Oropharyngeal Swabs

The LabCorp **2019 Novel Coronavirus (COVID-19), NAA [139900]** test is available for ordering by physicians or other authorized healthcare providers anywhere in the U.S. The test detects the presence of SAR-CoV-2, the virus that causes COVID-19, and is for use with patients who meet guidance for evaluation of COVID-19 infection.

LabCorp does not currently collect specimens for COVID-19 testing. Patients for whom testing has been ordered should not be sent to a LabCorp location to have a COVID-19 specimen collected.

Test ordering info

The test number for 2019 Novel Coronavirus (COVID-19), NAA is 139900. Test **must** be ordered, and specimen collected, by a physician or other authorized healthcare provider.

Sample requirements

Nasopharyngeal (NP) or oropharyngeal (OP) specimens collected on swabs with synthetic tips are preferred. Swabs should be transported in Universal Transport Medium (UTM). For complete test details, including other acceptable specimen types, visit the LabCorp Test Menu.

Causes for rejection

Swabs with calcium alginate or cotton tips; swabs with wooden shafts; refrigerated samples greater than 72 hours old; room temperature specimen submitted; improperly labeled; grossly contaminated; broken or leaking transport device; collection with substances inhibitory to PCR including heparin, hemoglobin, ethanol, EDTA concentrations >0.01M.

Turnaround Time

Current turnaround time for COVID-19 testing is estimated between 3-4 days.

Supplies needed for collection

Nasopharyngeal swab collection — A Nasopharyngeal Dry Flocked Swab that is placed and transported in UTM is the preferred method. However, any synthetic swab (dacron, rayon, polyester) of appropriate size and configuration can be used.

For NP swab collection, discard the two swabs included in the UTM. UTM is for transport only.

Oropharyngeal swab collection — Specimen should be collected using a synthetic swab that is placed and transported in UTM.

For OP swab collection, either UTM swabs or a synthetic swab can be used for specimen collection.

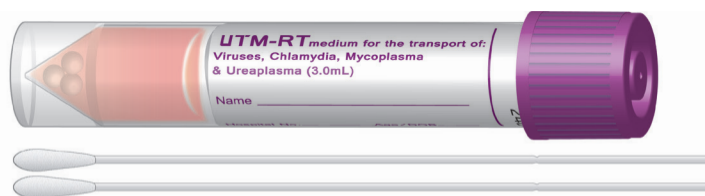
Specimen label and biohazard bag are also needed.

Preferred swab for NP sample collection. **Note:** Cap color may vary.



Supply order #: 93307

UTM tube for transport. Do **not** send swab dry.



Supply order #: 24674

Specimen Collection and Shipping Instructions

2019 Novel Coronavirus (COVID-19), NAA — Nasopharyngeal & Oropharyngeal Swabs

Nasopharyngeal (NP) collection

1. Assemble the supplies needed. For sample collection, have the synthetic swab (Nasopharyngeal Dry Flocked Swab preferred) and Universal Transport Medium (UTM), specimen label and biohazard bag available.
2. If the patient has a lot of mucous in the nose, this can interfere with collection. Have the patient use a tissue to gently clean the nasal passage before a swab is taken.
3. Open the swab package and remove the swab, taking care not to touch the tip to any surface or lay it down.
4. With the patient seated, if possible, tilt their head back 70 degrees, support the back of their head with your non-dominant hand.
5. Holding the swab in your hand, gently insert NP swab into the nostril along the septum floor of the nose extending straight back until the posterior nasopharynx is reached (distance from nostrils to external opening of ear). Rotate the swab several times while the swab is in contact with the nasopharyngeal wall.
6. Place NP swab into the UTM and break (snap) off at the indicator line on the swab. Replace cap and screw cap on securely.
7. Label sample and place in biohazard bag.
8. Freeze specimen and keep frozen.
9. Submit sample on one requisition, with test code 139900 — COVID-19.
10. To avoid delays in turnaround time when requesting multiple tests on frozen samples, **please submit separate frozen specimens for each test requested.**

Oropharyngeal (OP) collection

1. Assemble the supplies needed. For sample collection, have Universal Transport Medium (UTM) with included swabs, specimen label and biohazard bag available.
2. Open the UTM package and remove one swab, taking care not to touch the tip to any surface or lay it down.
3. Holding the swab in your hand, gently insert swab into back of the throat and tonsillar area. Rub the swab over both tonsillar pillars and the posterior oropharynx and avoid touching the tongue, teeth, and gums.
4. Place swab into the UTM and break (snap) off at the indicator line on the swab. Replace cap and screw cap on securely.
5. Label sample and place in biohazard bag.
6. Freeze specimen and keep frozen.
7. Submit sample on one requisition, with test code 139900 — COVID-19.
8. To avoid delays in turnaround time when requesting multiple tests on frozen samples, **please submit separate frozen specimens for each test requested.**

NP & OP Storage/Shipping requirements

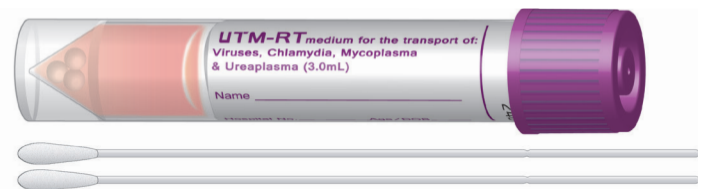
Samples/specimens **should** be shipped frozen due to limited stability at 2°-8°C. Refrigerated swabs submitted within 72 hours will be accepted.

Preferred swab for NP sample collection. **Note:** Cap color may vary.



Supply order #: 93307

UTM tube for transport. Do **not** send swab dry.



Supply order #: 24674



www.LabCorp.com

March 10, 2020